

K1 TOWER

STATIONARY INDOOR / OUTDOOR USE

Securing the places people work, study, live and visit.

- ▶ Pedestrian Entrances
- ▶ Lobbies and Entrances
- ▶ Help Points
- ▶ Retail Aisles
- ▶ Remote Locations
- ▶ Shuttle Stops
- ▶ Parking Lots & Garages
- ▶ Challenging Retrofits

UNIQUE BENEFITS

- ▶ Workplace violence protection
- ▶ Person of Interest or BOLO alerts
- ▶ Crime reduction and/or elimination
- ▶ Real-time situational awareness
- ▶ Actionable intelligence
- ▶ Force multiplying physical deterrence
- ▶ Cost effective

KEY FEATURES

- ▶ 360° Eye-level HD Recording
- ▶ Security Call Button
- ▶ Live Audio and Two-way Intercom
- ▶ Broadcast Messages
- ▶ Automatic License Plate Recognition
- ▶ People Detection
- ▶ Thermal Sensing
- ▶ Signal Detection
- ▶ Facial Recognition (optional)



Don't have your own monitoring? Ask about Knightscope+

K1 TOWER

STATIONARY INDOOR / OUTDOOR USE



Weight: 150 lbs.

- (4) 4K Ultra HD cameras w/ wide angle lenses
- (2) ALPR cameras (as needed)
- (1) Infrared thermal camera
- (16) Microphones
- (4) Speakers

○ Intercom Button

Directed to client-specified phone number or user interface

Connectivity

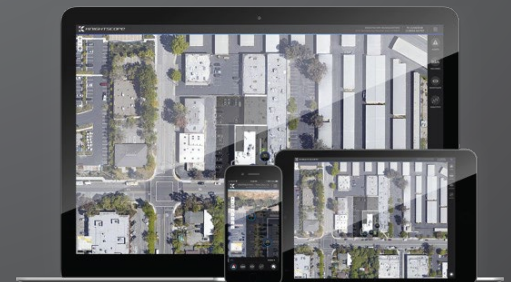
- Ethernet, WiFi, or 4G LTE Cellular connection, with minimum 10mbps/5mbp Download/Upload speeds; 25/25 or higher is recommended.

Electrical: 120v 20A outlet.

Mounting: Concrete, metal plate, or alternative hard surface.

USER INTERFACE

- ▶ Chrome browser interface; no software to install
- ▶ Live streaming to PC, Mac, tablet, cell phone
- ▶ 30-days raw video storage included
- ▶ Operating systems: MacOS, iOS, Android, Windows, Linux



See it in action at: <https://www.youtube.com/watch?v=DfNUex1SFS8>